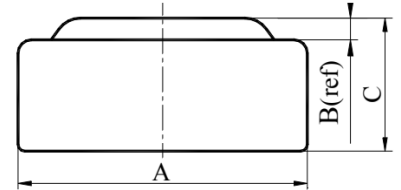


## SPECIFICATION APPROVAL SHEET

### XCell button cell LR44

- 1. Chemical System:** Alkaline manganese button batteries
- 2. Model No.:** LR1154 (LR44 AG13 A76)
- 3. Nominal Dimensions/:**  $\Phi 11.60 \times 5.40 \text{mm}$
- 4. Nominal Voltage:** 1.50V
- 5. Average Weight:** 1.92g
- 6. Applications:** Watch, calculator, electronic toy, etc.
- 7. Shelf Life:** Not less than 90% of the service capacity, following 1st year storage at 20°C.
- 8. Loading:** 1000 $\Omega$ (20°C)
- 9. Cut Off Voltage:** 0.90V
- 10. Capacity:** 145mAh
- 11. Caution for use:** There are risks of electrolyte leakage or causing damage to the device if the battery is recharged;  
The battery shall be installed with "+" and "-" in correct position;  
Short-circuiting and heating the battery disposing of the can must not be permitted.



Dimensions	Unit: mm
A	11.40—11.60
B	0.40(ref)
C	5.10—5.40

**Typical Discharge Characteristics at 20°C**

